

CAE

Oil Cooler (Automotive)



What we Simulate:

- Modal Simulation.
- '10G' Loading. (x,y,z directions)
- Pressure loading
- Steady state thermal
- Isothermal fatigue

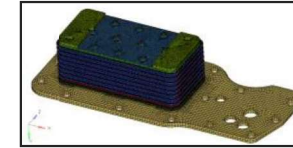
▪ Tool: Hypermesh, Ansys

Oil Cooler Case:

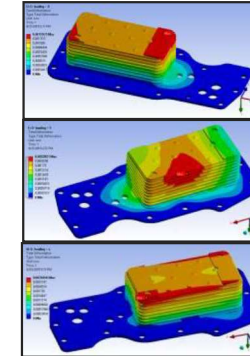
- Modal Analysis
- Non-linear Static Structural Analysis
- 'G'-loading.
- Pressure Test
- Thermal analysis
- Fatigue life prediction

Output:

- Mode shape plots.
- Stress & deformation Plot for Structural Simulation.
- Temperature distribution plot.
- Fatigue life plot.

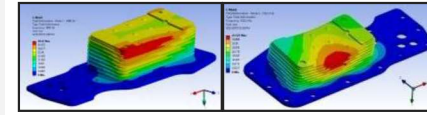


Mesh Model



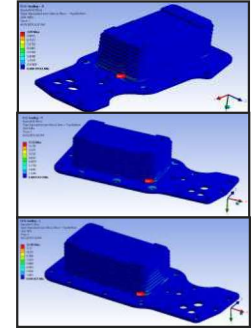
Directional Deformation Plot

Modal Analysis

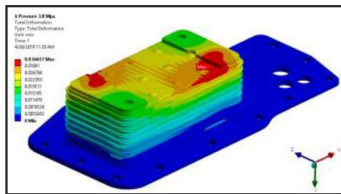


Frequency Plots

Structural Analysis ('G' loading)

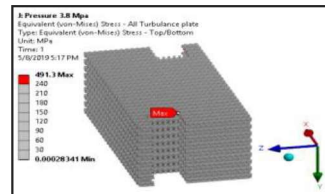


Stress Plots (x,y,z)

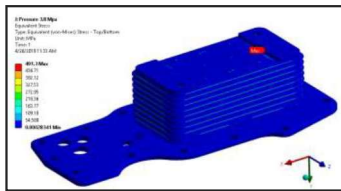


Displacement Plot

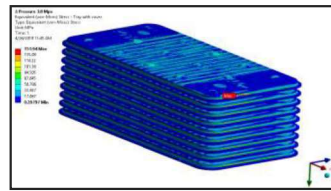
Structural Analysis (Pressure Case)



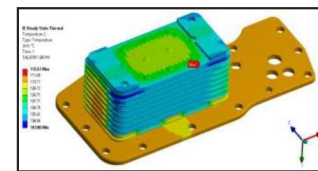
Stress Plots



Stress Plots

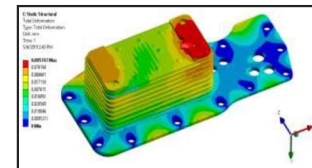


Stress Plots

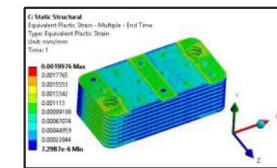


Temp. distribution plot

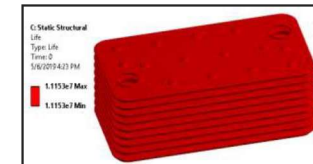
Steady state thermal & Fatigue



Displacement Plot



Plastic-Strain Plots



Life Plots